



[STUDY AT ADELAIDE \(//WWW.ADELAIDE.EDU.AU/STUDY\)](https://www.adelaide.edu.au/study/)

[RESEARCH & INNOVATION \(//WWW.ADELAIDE.EDU.AU/RESEARCH\)](https://www.adelaide.edu.au/research/)

[ENGAGE \(//WWW.ADELAIDE.EDU.AU/ENGAGE\)](https://www.adelaide.edu.au/engage/)

[ABOUT THE UNI \(//WWW.ADELAIDE.EDU.AU/ABOUT\)](https://www.adelaide.edu.au/about/)

# School of Education (/education/)

Adelaide has been making a major contribution to the field of education for over 100 years. Our vision is to benefit society through research, teaching and public debate in education.

We offer world-class teacher education and high-quality research in an intellectually stimulating environment. Education at the University of Adelaide is ranked in the top 100 in the world by the 2024 *Times Higher Education (THE) World University Rankings by Subject* [\[7\]](https://www.timeshighereducation.com/world-university-rankings/by-subject). (<https://www.timeshighereducation.com/world-university-rankings/by-subject>).

# Our programs



(/education/study/bachelor-of-teaching)

## **Bachelor of Teaching (/education/study/bachelor-of-teaching)**

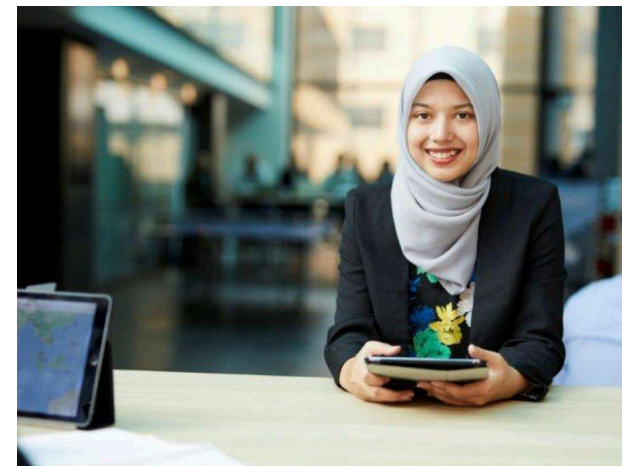
Our dual degree and practical pathways to become a teacher will provide you with a teaching qualification tailored to your career pursuits.



(/education/study/master-of-teaching)

## **Master of Teaching (/education/study/master-of-teaching)**

Our Master of Teaching offers a unique pathway to a rewarding career. It builds on your professional knowledge gained from your working experience and undergraduate degree.

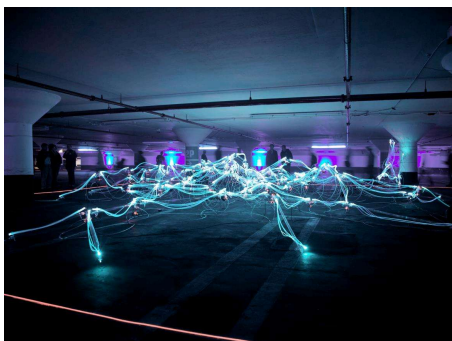


(/education/study/master-of-education)

## **Master of Education (/education/study/master-of-education)**

The Master of Education is for practicing educators who either want to pursue leadership careers, or examine and challenge their current teaching practice.

# Research and collaboration



(/education/research)

## Research (/education/research)

The School of Education offers a wide range of research expertise to the community, building on existing understandings of learning and providing innovative solutions to contemporary problems.



(/education/people)

## People (/education/people)

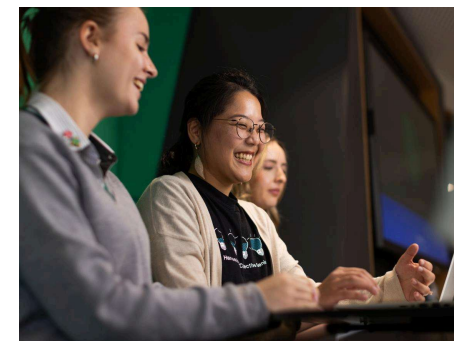
Our success is built upon our passionate academic and professional staff. Working together we provide an inclusive, enriching and intellectually stimulating environment for our students to thrive.



(/education/study/phd-students)

## PhD students (/education/study/p hd-students)

Interested in undertaking a postgraduate research degree with us? We offer exciting opportunities for researchers at the honours, masters and PhD levels.



(<https://www.adelaide.edu.au/pace/short-courses-individuals/micro-credentials/micro-credentials-for-classroom-confidence>)

## Micro-credentials (<https://www.adelaide.edu.au/pace/short-courses-individuals/micro-credentials/micro-credentials-for-classroom-confidence>)

With these self-paced, practical courses, you can upskill quickly, meet your professional development requirements and

transform your teaching  
–all on a flexible, digital  
platform.

## Teaching and Education at the University of Adelaide



# Latest news from the School of Education (<https://able.adelaide.edu.au/news/term/school-of-education>)

2  
APR

## **School of Education International Student School Orientation Excursion (<https://able.adelaide.edu.au/news/list/2025/04/02/school-of-education-international-student-school-orientation-excursion>)**

On March 19th the School of Education hosted a full-day International Student School Orientation Excursion, offering our international pre-service teachers an invaluable opportunity to experience the realities of South Australian schooling ahead of their placements.

19  
DEC

## **Faculty of ABLE 2024 Highlights (<https://able.adelaide.edu.au/news/list/2024/12/19/faculty-of-able-2024-highlights>)**

To wrap up 2024, the Faculty of Arts, Business, Law and Economics is reflecting on the year that was and featuring highlights from each school.

15  
NOV

## **Celebrating ABLE's grant successes in 2024 (<https://able.adelaide.edu.au/news/list/2024/11/15/celebrating-ables-grant-successes-in-2024>)**

The Faculty of ABLE recently celebrated the highest achieving staff from its schools who received an Australian Research Council grant of \$50,000 or above, and Level B's who received grants of \$30,000 or above.

OCT

### University of Adelaide's Apple Distinguished School status extended to 2027

(<https://able.adelaide.edu.au/news/list/2024/10/24/university-of-adelaides-apple-distinguished-school-status-extended-to-2027>)

The University of Adelaide's School of Education has had its existing Apple Distinguished School designation extended to 2027.

14

OCT

### Inclusion project empowers future teachers to support neurodivergent learners

(<https://able.adelaide.edu.au/news/list/2024/10/14/inclusion-project-empowers-future-teachers-to-support-neurodivergent-learners>)

New training formulated by the University of Adelaide is set to boost disability and inclusion studies in teaching degrees, creating more inclusive environments for neurodivergent learners.

[more... \(https://able.adelaide.edu.au/news/term/school-of-education\)](https://able.adelaide.edu.au/news/term/school-of-education)

## School of Education

### Address

Level 8, Nexus 10 Building,

Faculty of Arts, Business, Law and Economics (<https://able.adelaide.edu.au/>)  
10 Palmerley Street

THE UNIVERSITY OF ADELAIDE

SA 5005 AUSTRALIA

### Contact

T +61 8 8313 0694 (tel:+61 8 8313 0694)

F +61 8 8313 3604 (tel:+61 8 8313 3604)

E [education@adelaide.edu.au](mailto:education@adelaide.edu.au) (mailto:education@adelaide.edu.au)



(<https://www.facebook.com/uoa>)



(<https://www.linkedin.com/company/university-of-adelaide>)



Recognized  
continuous in  
school enviro

**Staff Intranet**



(//www.adelaide.edu.au/)

We acknowledge (//www.adelaide.edu.au/wirltu-yarlu/reconciliation) the Kaurna people, the original custodians of the Adelaide Plains and the land on which the University of Adelaide's campuses at North Terrace, Waite and Roseworthy are built.

## Information about

[The University \(//www.adelaide.edu.au/about/\)](http://www.adelaide.edu.au/about/)

[Campuses & Maps \(//www.adelaide.edu.au/campuses/\)](http://www.adelaide.edu.au/campuses/)

[Degrees & Courses \(//www.adelaide.edu.au/degree-finder/\)](http://www.adelaide.edu.au/degree-finder/)

[Working at Adelaide \(//www.adelaide.edu.au/jobs/\)](http://www.adelaide.edu.au/jobs/)

[Giving to Adelaide \(//www.adelaide.edu.au/give/how/\)](http://www.adelaide.edu.au/give/how/)

[Safer Campus Community \(//www.adelaide.edu.au/safer-campus-community/\)](http://www.adelaide.edu.au/safer-campus-community/)

[University Contacts \(//www.adelaide.edu.au/about/university-contacts\)](http://www.adelaide.edu.au/about/university-contacts)

## Information for

[Future Students \(//www.adelaide.edu.au/study/\)](http://www.adelaide.edu.au/study/)

[International Students \(//international.adelaide.edu.au\)](http://international.adelaide.edu.au)

[Current Students \(//www.adelaide.edu.au/student\)](http://www.adelaide.edu.au/student)

[Current Staff \(//www.adelaide.edu.au/staff/\)](http://www.adelaide.edu.au/staff/)

[Future Staff \(//www.adelaide.edu.au/jobs/\)](http://www.adelaide.edu.au/jobs/)

[Alumni \(//www.adelaide.edu.au/alumni/\)](http://www.adelaide.edu.au/alumni/)

[Business & Community \(//www.adelaide.edu.au/engage/\)](http://www.adelaide.edu.au/engage/)

[\(//go8.edu.au\)](http://go8.edu.au)



[\(/apru.org\)](http://apru.org)

[\(/www.facebook.com/uniofadelaide\)](https://www.facebook.com/uniofadelaide)

[\(/twitter.com/uniofadelaide\)](https://twitter.com/uniofadelaide)

[\(/www.instagram.com/uniofadelaide/\)](https://www.instagram.com/uniofadelaide/)

[\(/www.tiktok.com/@uniofadelaide\)](https://www.tiktok.com/@uniofadelaide)

[\(/www.youtube.com/user/universityofadelaide\)](https://www.youtube.com/user/universityofadelaide)

[\(/www.linkedin.com/school/uniofadelaide/\)](https://www.linkedin.com/school/uniofadelaide/)

[\(/mp.weixin.qq.com/s/Ukwljz8sWpw6idGRvvHEKA\)](https://mp.weixin.qq.com/s/Ukwljz8sWpw6idGRvvHEKA)

The University of Adelaide [\(/www.adelaide.edu.au/\)](http://www.adelaide.edu.au/)

Adelaide, South Australia

5005 Australia

Australian University Provider Number PRV12105

CRICOS Provider Number 00123M

[Disclaimer \(/www.adelaide.edu.au/legals/disclaimer/\)](http://www.adelaide.edu.au/legals/disclaimer/) | [Copyright \(/www.adelaide.edu.au/legals/copyright/\)](http://www.adelaide.edu.au/legals/copyright/) | [Privacy Policy \(/www.adelaide.edu.au/legals/privacy/\)](http://www.adelaide.edu.au/legals/privacy/)

Authorised by: Executive Dean | Faculty of Arts, Business, Law and Economics ([mailto:able\\_marketing@adelaide.edu.au](mailto:able_marketing@adelaide.edu.au))

Maintained by: Marketing & Recruitment | Faculty of Arts, Business, Law and Economics ([mailto:able\\_marketing@adelaide.edu.au](mailto:able_marketing@adelaide.edu.au))

Last updated: 4 Oct 2024