

# COMPANY PROFILE



PT MITRABARA ADIPERDANA Tbk



*We are ...*





A close-up photograph of a large pile of dark, fragmented charcoal or wood chips. The pieces are irregular in shape and size, with some showing a lighter, fibrous texture. A bright red logo is overlaid in the center of the image. The logo consists of a lowercase 'm' followed by a stylized 'A' that contains a decorative, swirling pattern.

**ma**



# Vision & Mission

## Vision

To be a leading corporation with sustainable energy basis, having world-class quality standard and to contribute for community development

## Mission

To develop eco friendly energy business activities

To implement a world class Good Corporate Governance

To provide good quality product and focus on customer satisfaction

To implement corporate social responsibility by developing the local economy

To increase sustainable enterprise value

To build high competence human resources and excellent organization culture



# Company in Brief

Established on May 29, 1992, PT Mitrabara Adiperdana Tbk engages in the coal mining business. Its coal mine is located in Loreh Village, South Malinau District, Malinau Regency, North Kalimantan Province, Indonesia. Mitrabara started its production in 2008 and now has a production volume of 4,000,000 ton per year.

In its business operation, Mitrabara has an integrated infrastructure, from upstream to downstream activities, through its affiliated companies. They are PT Baradinamika Mudasukses for coal handling and infrastructure, PT Global Trans Energy International for barging and transshipment and PT Armada Indonesia Mandiri for floating crane.



# Milestone



Mitrabara obtained exploration mining concession.

**1995**



Mitrabara commenced its coal mining operations.

**2008**



**1992**

Mitrabara was established in Central Jakarta as a coal mining company.



**2003**

Mitrabara obtained exploitation mining concession.



**2009**

Mitrabara obtained a Mining Business Permit (IUP) for Production Operations, in compliance with the Law No. 4/2009 regarding Mineral and Coal Mining.



Mitrabara obtained Clear and Clean Certificate from the Directorate General of Minerals and Coal.

**2012**



Mitrabara conducted its initial public offering of its shares on the Indonesia Stock Exchange.

**2014**



Mitrabara acquired PT Cipta Tenaga Surya and collaborated with ENGIE Global Developments BV and PT Tritama Mitra Lestari for solar power plant project.

**2016**



**2013**

Mitrabara acquired 99.995% of PT Baradinamika Mudasukses shares.



**2015**

Mitrabara established a subsidiary, namely PT Mitra Malinau Energi for bio mass power plant project. Mitrabara completed the construction of Coal Handling Facility and hauling road to increase its productivity.





# Visit Our Mine Site



Jakarta  Tarakan (3 hours)

Tarakan  Malinau (0,5 hours)

Tarakan  Malinau (3,5 hours)



# Specifications

Our products have the desirable characteristics of low-sulfur and ash, making it clean and environmental friendly.



## MALINAU MEDIUM CV

Total Moisture	<b>19%</b>
Inherent Moisture	<b>12%</b>
Ash Content	<b>4%</b>
Total Sulfur	<b>0.15</b>
CV (adb)	<b>6,200</b>
CV (arb)	<b>5,700</b>

## MALINAU LOW CV

Total Moisture	<b>21%</b>
Inherent Moisture	<b>13%</b>
Ash Content	<b>4%</b>
Total Sulfur	<b>0.15</b>
CV (adb)	<b>5,950</b>
CV (arb)	<b>5,400</b>



# Area of Operations



<b>LOREH STOCKPILE CAPACITY</b>	Stockpile Area	<b>8.5 Ha</b>
	Run of Mine	<b>200,000 Ton</b>
	Crushed	<b>100,000 Ton</b>
	Crushing Plant	<b>350 Ton/hour</b>
	Hauling Road	<b>64 Km</b>
	Hauling Rate	<b>2,200 Ton/hour</b>

<b>BENGALUN STOCKPILE CAPACITY</b>	Stockpile Area	<b>12.2 Ha</b>
	Run of Mine	<b>100,000 Ton</b>
	Crushed	<b>150,000 Ton</b>
	Crushing Plant	<b>1,250 Ton/hour</b>
	Jetty	<b>8,000 DWT</b>
	Loading Capacity	<b>750 Tph &amp; 1,500 Tph</b>

→ Note: all facilities are owned by Mitrabara



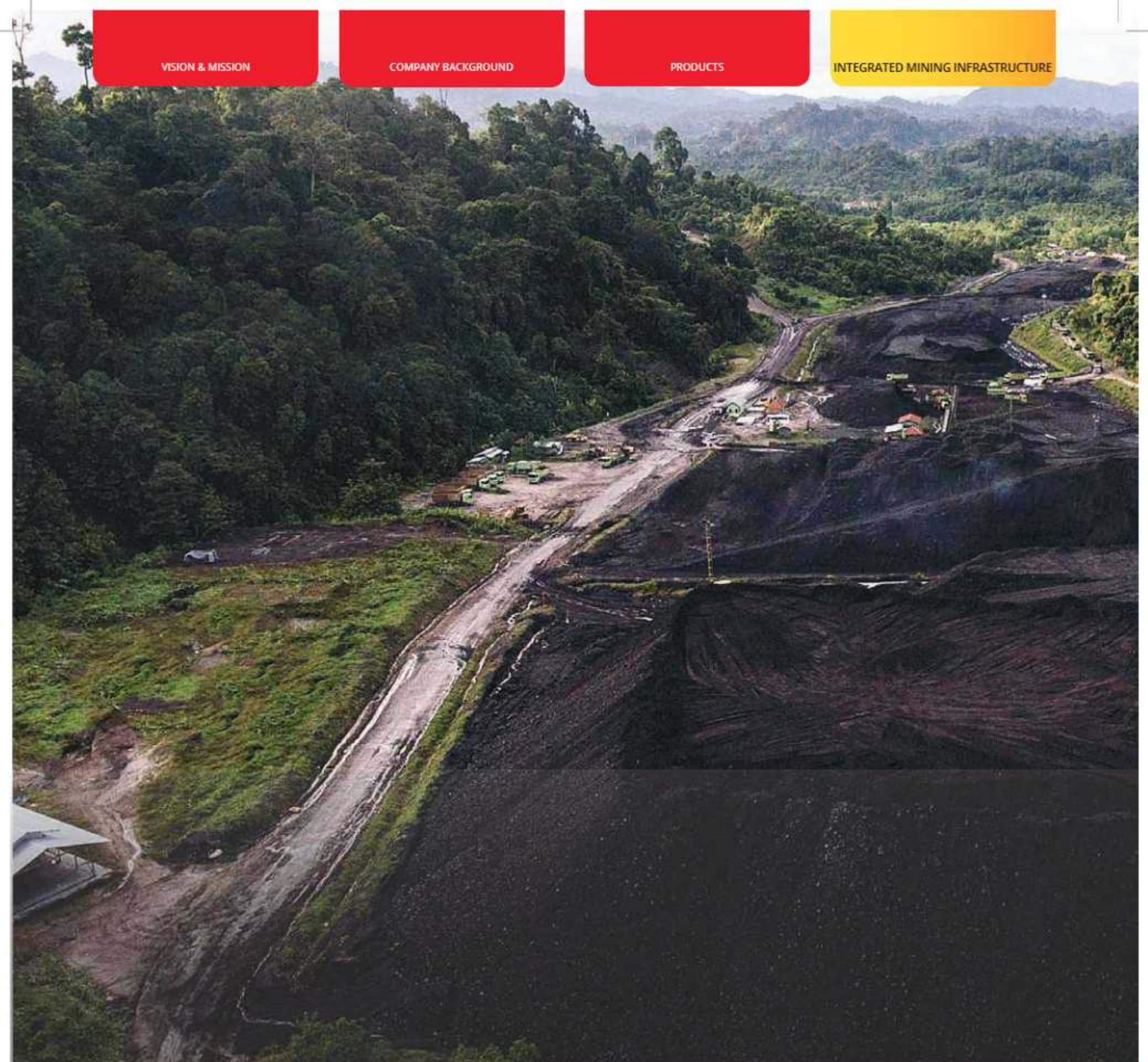
# Our Distribution & Production Plan




Mitrabara has a production volume target of 4,000,000 ton per year.











Located in Loreh with an area of 8.5 Ha, our Stockpile has a capacity of 300,000 MT. Owned by our subsidiary, PT Baradinamika Mudasukses, its distance is around 11 KM from the mine pit.





**Our coal is trucked using our private hauling road from Loreh Stockpile to our Jetty at Muara Bengalun with distance of 64 KM. This facility is also owned by our subsidiary, PT Baradinamika Mudasukses.**



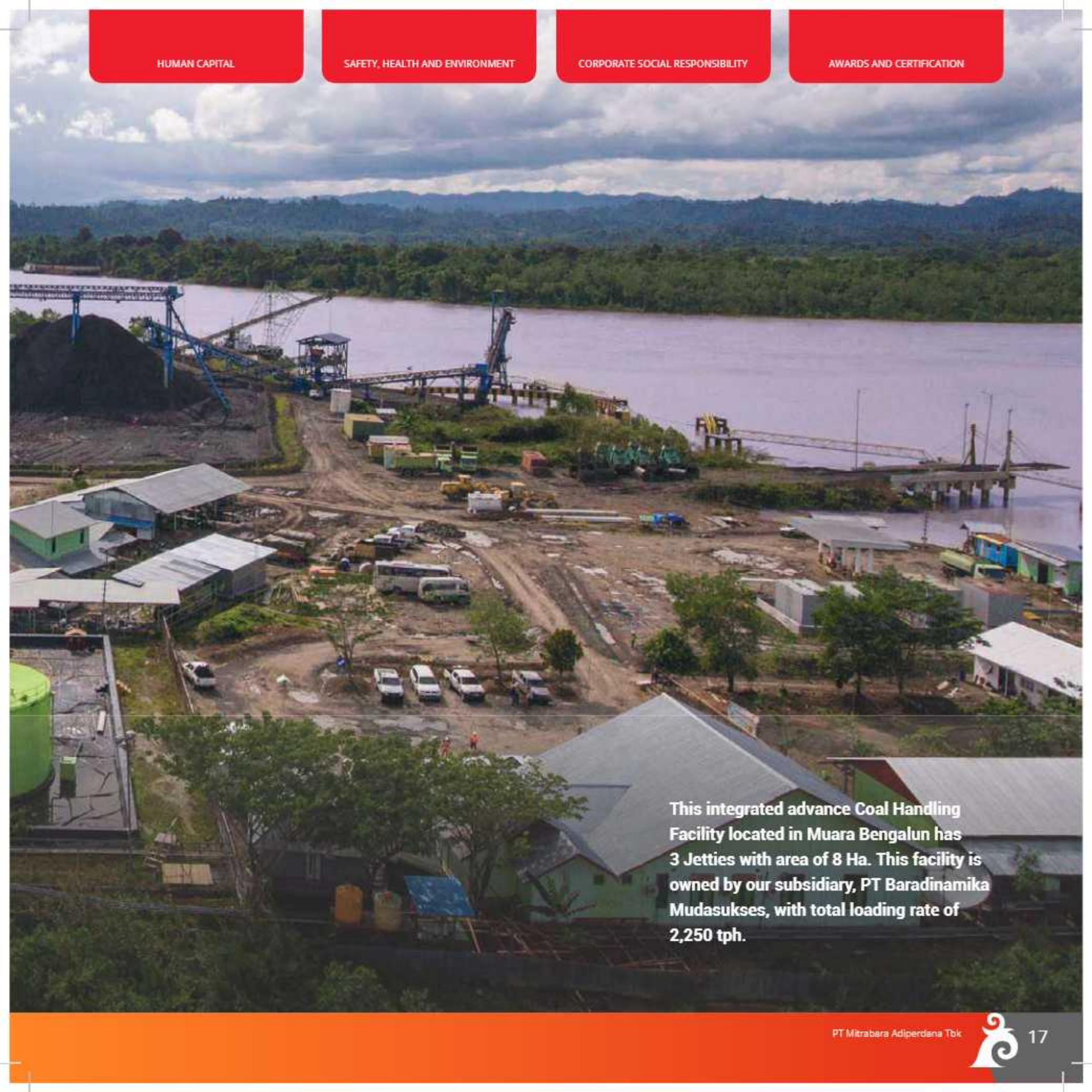


**A double bridge system that we built at every river along our hauling road will ensure Mitrabara to fulfill its commitment of coal delivery.**










This integrated advance Coal Handling Facility located in Muara Bengalun has 3 Jetties with area of 8 Ha. This facility is owned by our subsidiary, PT Baradinamika Mudasukkses, with total loading rate of 2,250 tph.





To improve our fuel management, we have implemented an integrated and automatic fuel management system, called Scada. This system collects, stores and analyzes all fuel data for further improvement. Our fuel tanks have total capacity of 2,000 liter.







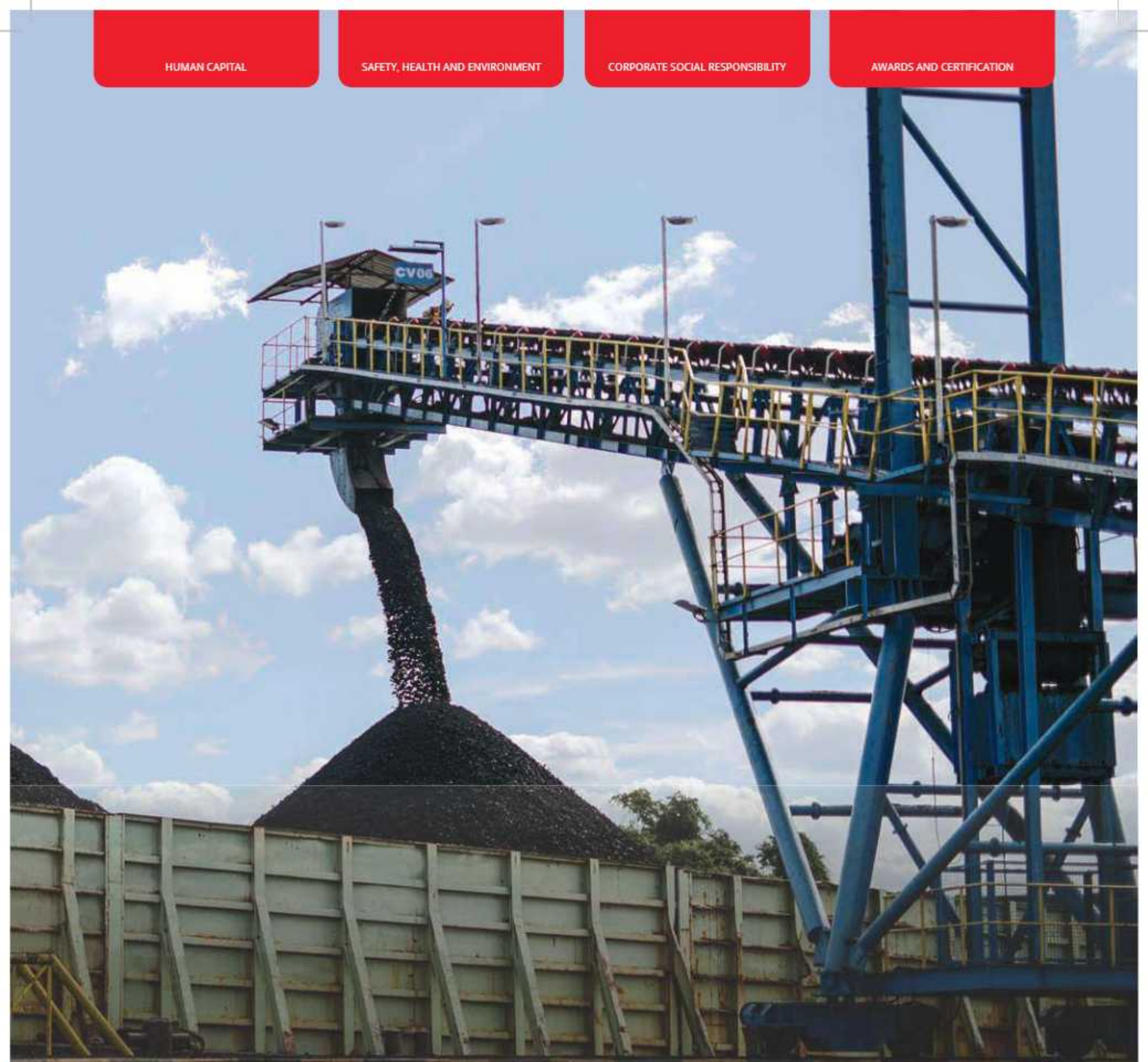
Our coal laboratory at Muara Bengalun is equipped with latest technology. By having this facility, our coal quality is frequently tested on a regular basis in a quick and precise way.





Supported by our affiliate,  
PT Global Trans Energy International, for  
our transshipment activities,  
we have a better control and coordination  
since we are in the same group.













**Our affiliate, PT Armada Indonesia Mandiri, dedicates 3 floating cranes to support our operation at anchorage point in Tarakan.**



# Good Mining Practice





## Safety Management

Mitrabara puts the highest emphasis on good mining practice with the utmost attention to the surrounding areas. In conjunction with the coal mining activities, Mitrabara complies with all the prevailing laws and regulations and also will continuously fulfill future requirements from both the government and business ethics.

### Safety Attire & Equipment

To ensure our valuable human asset's well being, we equipped our people with the necessary attire to be able to perform their best in the mine area. Mitrabara always makes sure that they are well protected.

### Safety Talk

We hold a regular safety talk not only to remind the importance of creating a safe working environment but also making sure that the concept of safety is entirely acknowledged within the whole team.



# Human Capital

We believe human capital plays an important role in advancing our company. Therefore, we are very selective in the recruiting process.

Developing our employees' competence is always our focus. It includes providing hard skill and soft skill trainings as well as opportunities to grow, in order to achieve our mission to build strong human capital competence and excellent organizational culture.









# Environmental Friendly







## Water Management

We are constantly evaluating and making improvement on maintaining our water management treatment in the mines. Carefully planned and assessed, the water management in Mitrabara mine sites are heavily controlled both on the infrastructure and the quality of the water.



### NURSERY

Our nursery is the home of our massive and diverse collection of indigenous flora majorly growing in the areas around the mines. The effort over the years has successfully preserving and eventually cultivating those species of plants to be able to grow as they are intended in the natural habitat.

### RECLAMATION

In an effort to preserve the environment, Mitrabara does not compromise when it comes to making substantial development for this matter. The process of mine reclamation in the mines has gone through various planning and implementation to achieve the highest compliance level as possible. All those steps are the reflection of our commitment in making a better future for the nation.

## Reclamation Management



## Green Proper

PT Baradinamika Mudasukses, our subsidiary, received green proper award for environmental by North Kalimantan Province Government.





# Corporate Social Responsibility

## 5 Pillars

Education



Health



Social



Economy



Environment

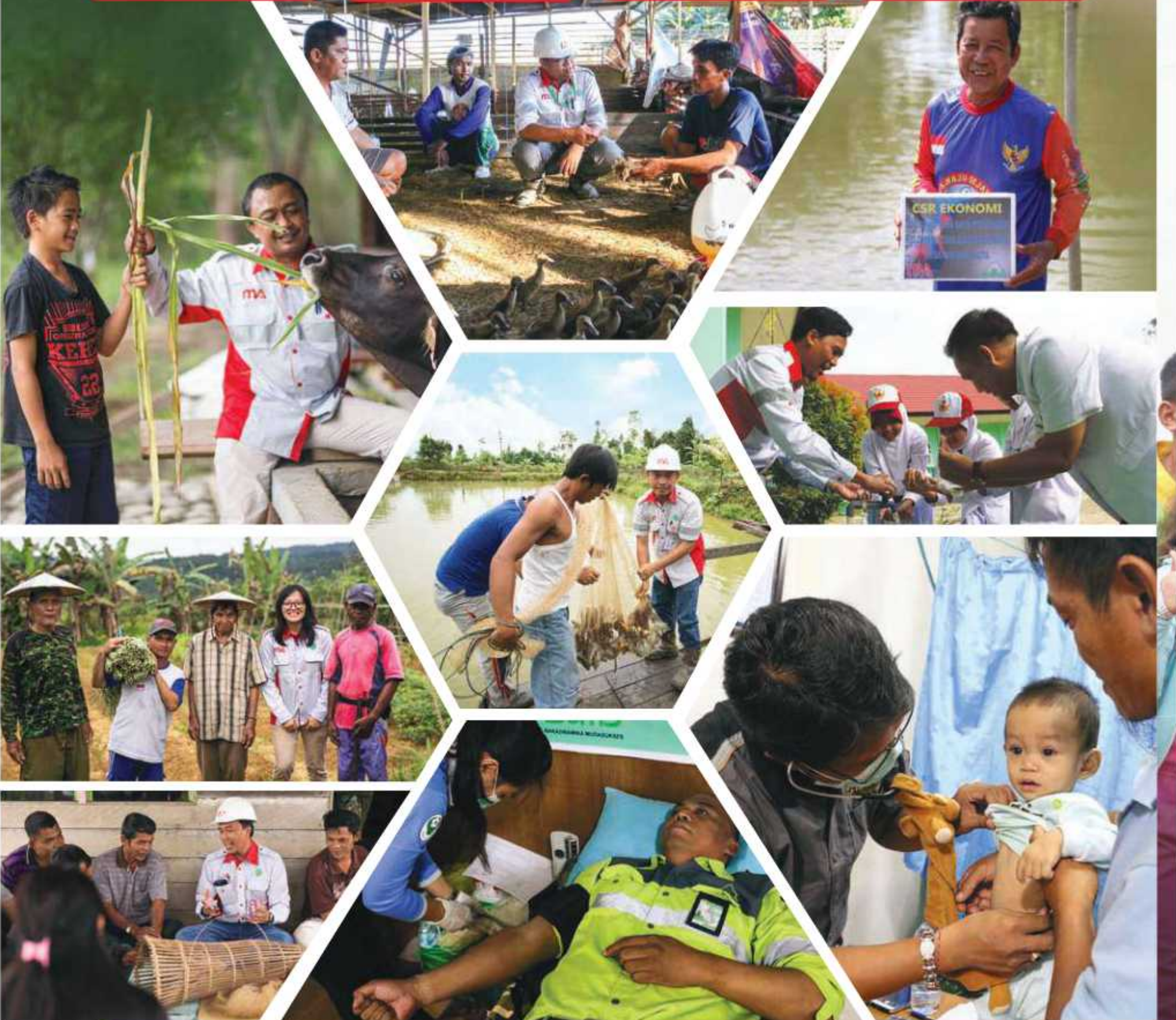


We are aware that the profitable growth of Mitrabara depends on the environmental and social sustainability of our surrounding communities. Hence, we understand that it is in our best interest to contribute to such sustainability.













Business should not only be responsible morally to the stakeholders but also to the society, environment and towards the sustainability of its surrounding at large.



# Corporate Value

## 5 Baramulti Values

Integrity



Passion



Perseverance



Compassion



Humility



These are the values that guide our business conducts, our relationship with customers, business partners, shareholders and other stakeholders. As Mitrabara continues to evolve and grow, these five values remain constant.





**2015**  
**Indonesia**  
**Fastest Growing**  
**Issuers**  
by Warta Ekonomi

**2016**  
**Best of the Best**  
**Business**  
by Asean Business &  
Company Award

**2016**  
**Indonesia**  
**Fastest Growing**  
**Issuers**  
by Warta Ekonomi

**2015-2016**  
**Green Proper for**  
**Environment**  
by North Kalimantan  
Province Government

**2017**  
**Indonesia Investment**  
**Award - Infrastructure,**  
**Utilities &**  
**Transportation**  
by Warta Ekonomi

**2017**  
**Top CSR on Nawacita 7,**  
**Rural Electricity**  
**Program**  
by Businessnews - KNKG

**2017 - Top**  
**Leader on CSR**  
**Commitment**  
by Businessnews - KNKG



# Contact Us

## HEAD OFFICE

GRHA BARAMULTI  
Jl. Suryopranoto No. 2  
Komplek Harmoni Plaza Blok A-8  
Jakarta Pusat 10130  
INDONESIA  
ph. +62 21 6385 6211  
fax. +62 21 6385 2326

## SITE OFFICE

Loreh Village  
South Malinau District  
Malinau Regency  
North Kalimantan  
INDONESIA

 [www.mitrabaraadiperdana.co.id](http://www.mitrabaraadiperdana.co.id) 









